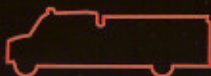
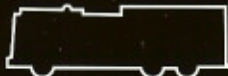


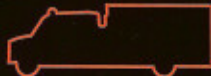
PUMPERS



RESCUE-PUMPERS



TANKERS



- Aluminum formed body
- Aluminum - 3/16" 5052 sheet with aluminum sub-frame
- Full-height compartments on both sides
- Standard swirl finish aluminum pump house with stainless steel panels
- Full right side hinged access panel on pump house for superior maintenance and service access
- Full-finish interior on compartments with Zolatone® paint
- 15 step PPG paint on body with durable, high luster finish

- VMUX solid state electronics for maximum programmable flexibility with strong system reliability
- Tank capacities up to 1000 gal in a UV stabilized polypropylene tank
- Industry first independent UL welder certification
- Body durability tested by American LaFrance at independent proving grounds
- Standard - Internal ladder and hard suction storage with low hosebed height



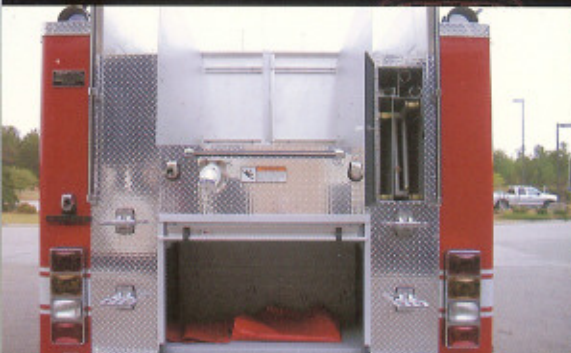
BY AMERICAN LAFRANCE

LIBERTY™ RESCUE PUMPER

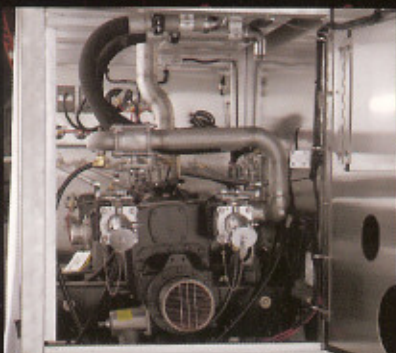
CUSTOM AND COMMERCIAL

LIBERTY™ RESCUE PUMPER

CUSTOM AND COMMERCIAL



Rear view with low hosebed



Full access to pump house



Full height right side compartments

These are the typical specifications for the Liberty™ Rescue-Pumper by American LaFrance:

MODEL: Liberty Rescue-Pumper by American LaFrance.

CHASSIS: American LaFrance Custom, International, or Freightliner.

CONSTRUCTION:

Aluminum: 5052-H32 3/16" formed body panels with integral 6063-T52 sub-frame.

MOUNT SYSTEM: American LaFrance proprietary Flexible Mount System™ (FMS).

BODY STYLES: Three full-height compartments left and right with low hosebed at rear.

WATER CAPACITY: 500, 750 or 1000 gal polypropylene tanks.

PUMP HOUSE: Traditional aluminum pump house and overlap panel in side-mount and top-mount configurations.

PUMPS: Hale QFLO+ split-shaft 1250 GPM pump standard. Hale QMAX 1500 GPM pump optional.

FOAM SYSTEMS: Hale single or dual tank Class A or Class A/B direct injection system with integral foam cell optional.

DOORS: Roll-up doors standard. Hinged overlap doors optional.

LADDER/HARD HOSE/BACKBOARD STORAGE: Integrated ladder tunnel on right side with hard suction tunnel storage on left (optional conversion to backboard storage). Full depth compartments optional.

GENERATORS: 8 KW PTO-driven hydraulic generator (Liberty custom chassis), or compartment-mounted gasoline generators with capacities up to 5 KW (optional — either chassis).

LIGHTING: Body-mounted telescoping lights optional.



BY AMERICAN LAFRANCE

For your nearest American LaFrance dealer, go to www.americanlafrance.com.

Some specifications and features shown or mentioned in this brochure are optional and are available upon request at extra cost. Specifications are subject to change without notice. ©2009, American LaFrance, LLC. All rights reserved.